

# How to Setup CMS Adapter

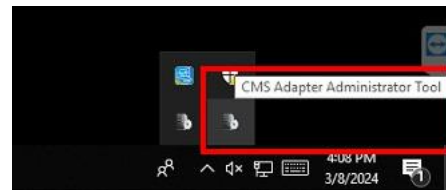
## Introduction

**CMS Adapter** is a support tool for the CMS Server to connect to ZNR/YVR channels for real-time viewing and playback functions through a CMS workstation or web client.

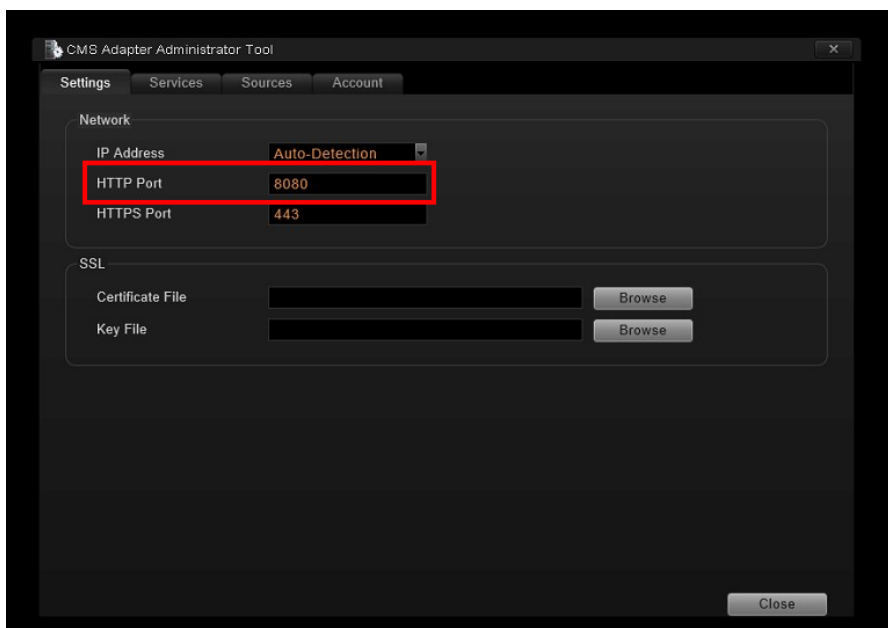
## How to Setup CMS Adapter

1. Download **CMS Adapter** from ACTi Download Center or use this link to download: <https://Download.acti.com?id=6295fa9c-08aa-4532-be9b-87845b9ad922>.
2. Install **CMS Adapter** on a windows PC which is in the same network segment as the CMS server and ZNR.

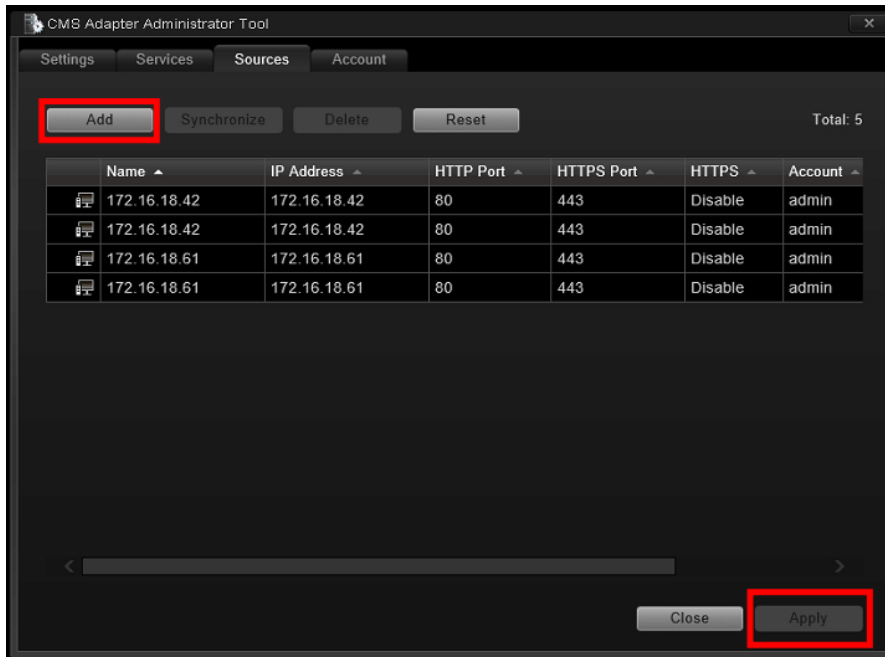
3. Open **CMS Adapter Administrator Tool** from the Windows taskbar. On the **Account** tab, setup the password.



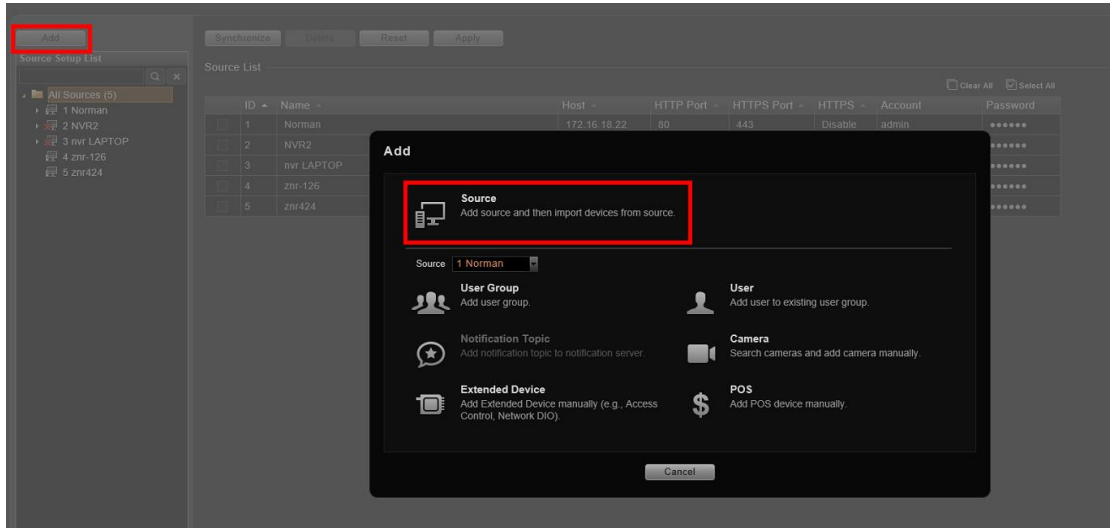
4. On the **Settings** tab, setup the **CMS Adapter HTTP port** which should be different from the CMS service HTTP port (default is 80).



5. Go to the **Sources** tab, and click **Add** to fill in the ZNR information like **IP address**, **Account**, and **Password**. Then, click **Apply**.



6. Login on the CMS server through the CMS Workstation or Web client. Go to **Setup > Source**, then click **Add** to add source.



7. Type the name, IP address, password and port of the CMS adapter which was configured in Step 4.

**Add Source**

Name

• Main Address

Host

HTTP Port

HTTPS Port

Account

Password

• External Address

Host

HTTP Port

HTTPS Port

• Internal Address

Host

HTTP Port

HTTPS Port

Next Cancel Apply

8. After all these settings, the ZNR is now added into the CMS as a source.