

How to Add Z Cameras Manually Through ONVIF

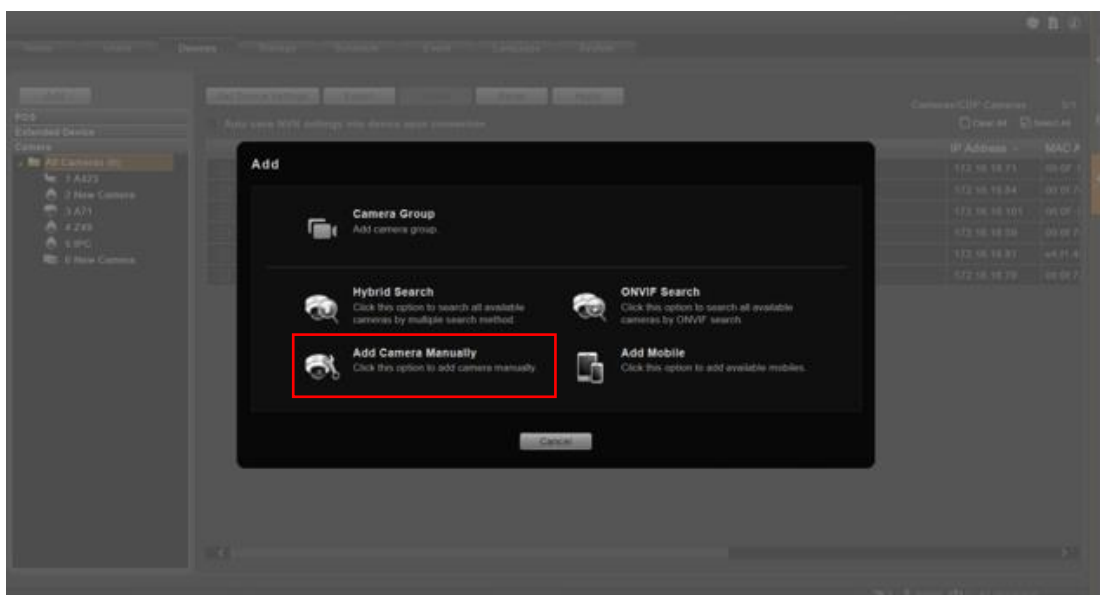
Introduction

Z-series cameras can be manually added to the NVR3 server through ONVIF. Follow the quick instructions below.

How to Add Z Cameras Manually Through ONVIF

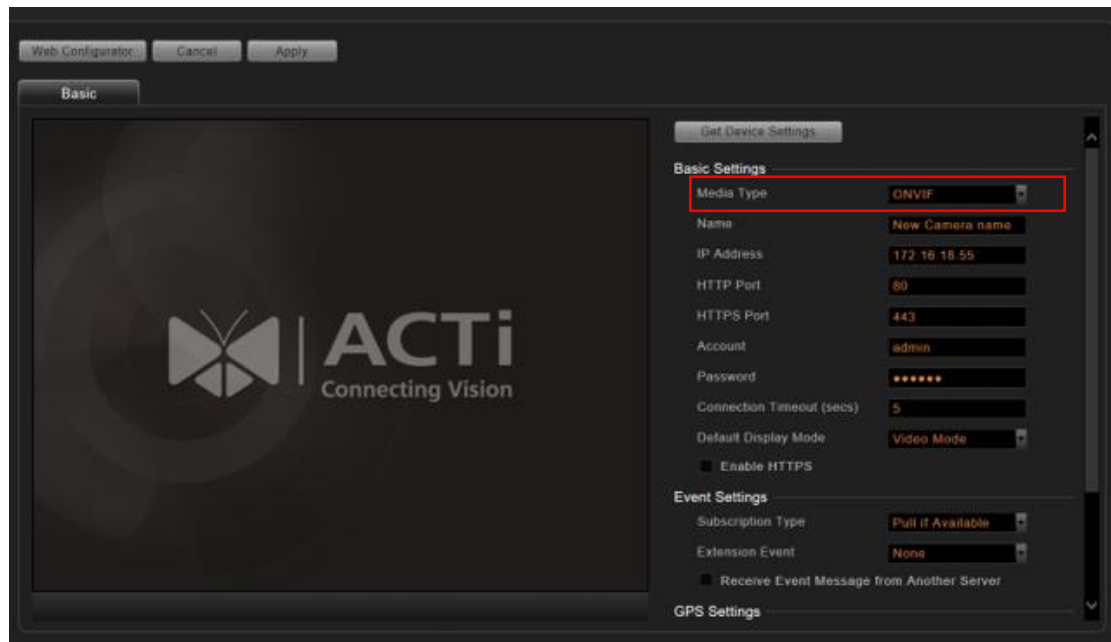
A. Add the camera manually

Go to **Setup > Devices > Add > Add Camera Manually**.



B. Fill up all the necessary information

1. On **Media Type**, select "ONVIF".



2. Fill in the **IP Address**, **Port**, **Account**, and **Password** of the Z camera.

3. Click **Get Device Setting**, then click **Apply**.

Now, you have successfully added an ACTi Z camera to the NVR.