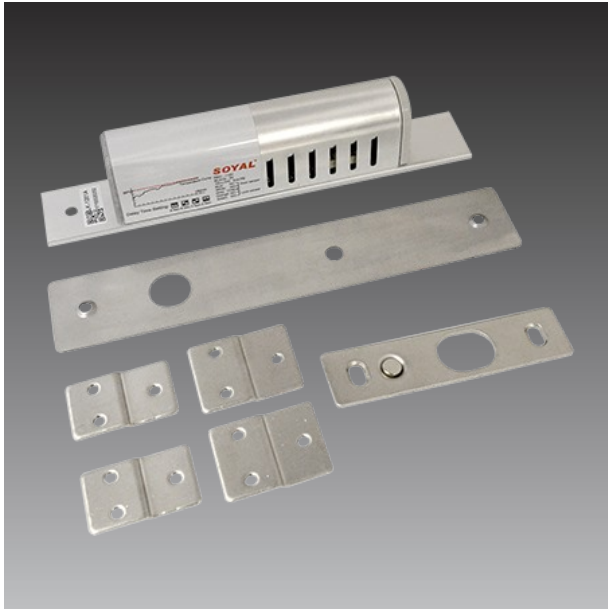


PLOC-0002

Electric Bolt Lock



► Specifications

Product Profile

Original Manufacturer	Soyal
Product Type	Lock
Original Model	AR-1207A-36
Description	Electric Bolt Lock
Locking Mode	Fall Safe
Time Delay Option	0,3,9 seconds

General

Power Source	DC 12-24V
Power Consumption	1A (12V), 0.5A (24V)
Weight	850g (1.874lb)
Operating Temperature	-20°C ~ 65°C (-4°F ~ 149°F)
Warranty	1 Year(s)

▶ Related Products

Power Supply Accessories - Power Adapter

PPBX-0011



Power Adapter AC 100~240V, with universal connectors for all DC12V powered devices