

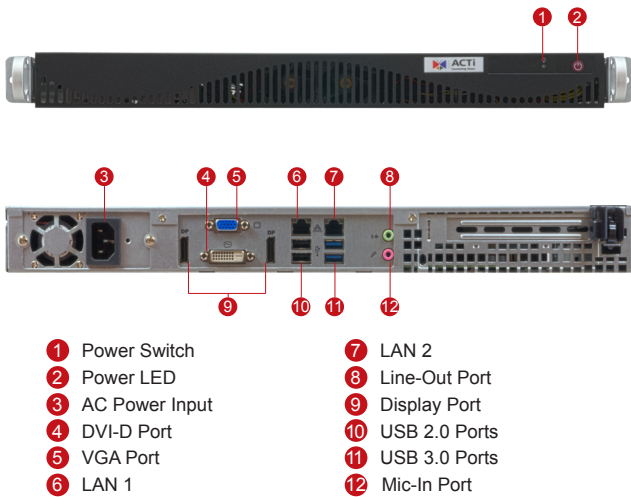
LPR-120

6-Channel 1-Bay ALPR Rackmount Standalone IVS

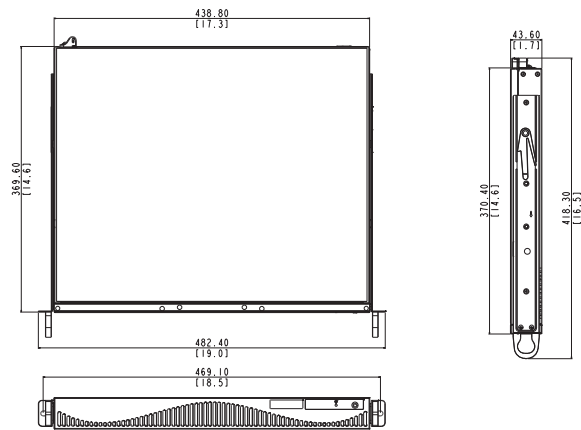


- Concurrent analysis of up to 6 channels for Automatic License Plate Recognition
- One region of interest per channel
- Searching and filtering based on time and vehicle color
- Convenient plate numbering searching
- Analysis for live and pre-recorded videos
- Blacklist and whitelist notification

PHOTO INDICATION



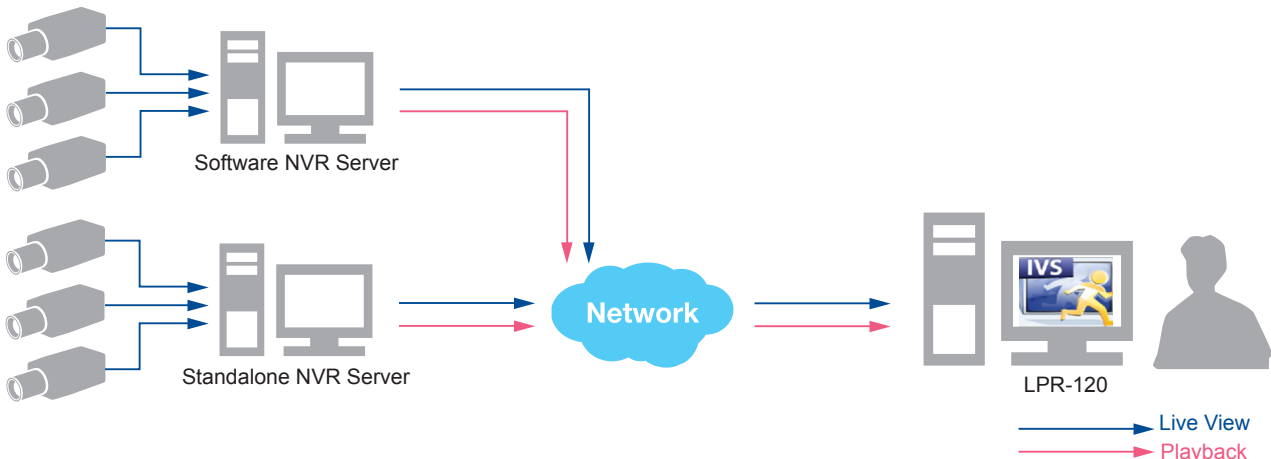
DIMENSION DIAGRAM



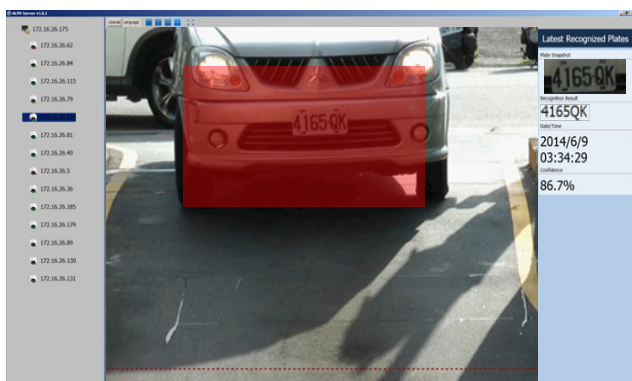
Unit: mm [inch]

SOLUTION ARCHITECTURE

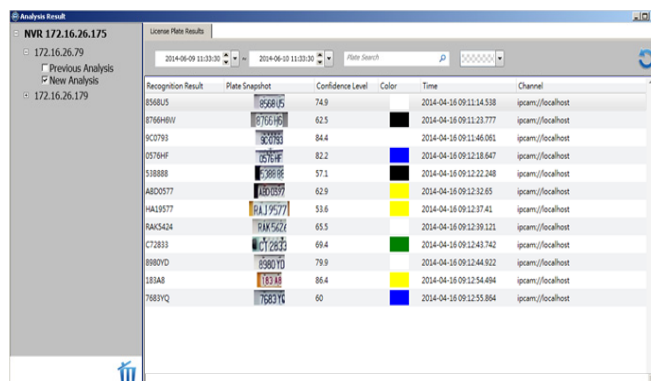
LPR-120



KEY FUNCTIONS



Automatically read license plates appearing in a preset area.



Convenient search for analysis result by time and vehicle color.

PRODUCT SPECIFICATION

LPR-120

• General

Maximum Number of Analytical channels	6
Bundled License	1 Channels
Video Compression	H.265, H.264, MPEG-4, MJPEG
Analyzed Stream	Live view and pre-recorded video from ACTi cameras, NVR 3 and standalone NVRs
Black and white list	Real-time notification and live view panel display
License Plates Supported	Australia / Austria / Bulgaria / Costa Rica / Czechia / Denmark* /Dubai/ Ecuador / Georgia / Germany / Greece / Guatemala / Hong Kong / Hungary / Indonesia / Ireland / Italy / Japan / Jordan / Korea, South / Kuwait / Laos / Malaysia / Malta / Mexico* / Mongolia / New Zealand / Oman / Poland / Romania / Russia / Saudi Arabia / Slovakia / Spain / Switzerland / Taiwan / Thailand / Ukraine / United Kingdom / Vietnam (* To be available through future versions upgrade)
Maximum local display resolution	1920x1080

• Live View

Display Layout Mode	1, 2, 3, 4, 9
---------------------	---------------

• Video Analytic Algorithms

Algorithm	Automatic License plate recognition (vehicle speed less than 60 km) with blacklist / whitelist notification
Maximum number of algorithms	1 algorithm per channel
Analyzed Stream	Live View, Playback
Analyzed Source	NVR, Camera, pre-recorded video

• Storage

Interface	Serial ATA
HDD Bay	Maximum 1 x 2.5" SATA disk (Disk not included)
External Storage Support	USB

• Search & Playback

Recording Search	Search video recordings by time, analytic rule, channel, and display the result with click-to-play snapshots
Playback Control	Pause; stop
Filter	By Time / Object Color
Wildcard Plate Numbering Searching	Yes
Analysis Result Export	Export video clips in RAW format and meta-data in XML

• Remote Access

PC Client Program	IVS client
Remote Client PC Requirements	Intel Core 2 Quad 2.4 GHz, 4GB RAM (Recommended: Intel Core i7-920 2.67 GHz, 4GB RAM)

• System

Operating System	Win 7 (64 bit) Std. Embedded
Language	English and Traditional Chinese Supported

• Hardware

CPU / RAM	Intel Core i7-4770S / 8 GB
Dimensions (W x H x D)	482 mm x 43.6 mm x 418.3 mm (19" x 1.7" x 16.5")
Weight	6.34 kg (13.98 lb)
Operating Temperature	0 ~ 40° C (32°F ~ 104°F)
Power Source	AC 100 ~ 240V (Power cord included in the package)
Approvals	CE (EN 55022 Class B, EN 55024), FCC (Part15 Subpart B Class B), UL (for built-in power adapter)
USB	2 x USB 3.0 ports and 2 x USB 2.0 ports
Ethernet Port	LAN1: 10/100/1000 Mbps; LAN2: 10/100/1000 Mbps
Audio Port	Mic-in, Line-out
Display Port	DVI-D, VGA, Display Port

• Integration

Unified Solution	Fully compatible with ACTi cameras, encoders, central management system, TV wall and intelligent video surveillance software
------------------	--

* Performance might vary depending on the actual traffic flow being analyzed

* All specifications are subject to change without notice.
* All brand names and registered trademarks are the property of their respective owners.