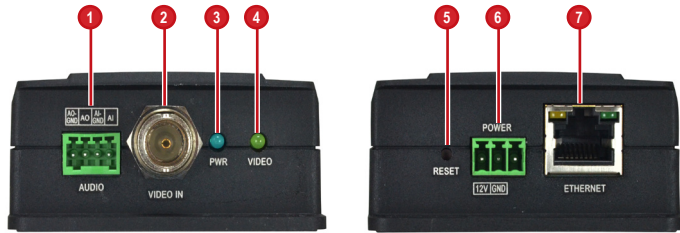


Introduction

This guide contains all the information you need to quickly setup the Video Encoder. For detailed information on installations or operations, please refer to the Hardware Manual and Firmware Manual on ACTi website (www.acti.com).

Device Overview



1	Audio Input / Output Connector	5	Reset Button
2	Video In Connector	6	DC 12V Power Connector
3	Power LED	7	Ethernet Port
4	Video In Activity LED		

Step 1: Unpack the Device

Check if the package comes with the following items:



Video Encoder



Mounting Screw Pack



Terminal Blocks

- Power
- Audio

Step 2: Mount the Device

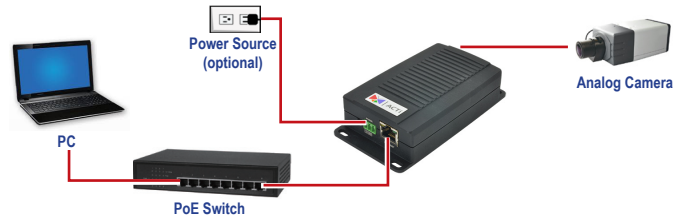
The device can be directly mounted on a surface, such as walls.

Attach the 4 supplied screws to secure the device.



Step 3: Connect the Device

Basic Connection Example



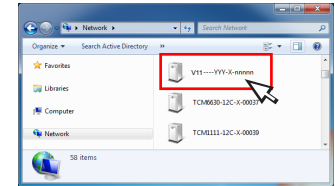
Step 4: Access the Device

On Network with DHCP Server / Router (Automatic IP)

1. Connect the device and the PC within the same network segment. Once connected, an IP address will be assigned to the Encoder.
2. Find the Encoder via **Windows Explorer** or **IP Utility**.

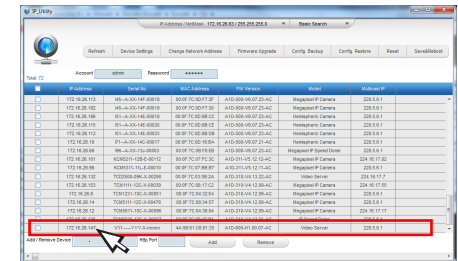
By Windows Explorer

- a. Go to **Start > My Computer > Network**.
- b. Double-click on the device name.



By IP Utility

- a. Download **IP Utility** from our website (www.acti.com).
- b. Run **IP Utility** to start searching for network devices.
- c. Click the IP address of the Encoder.



3. The **Web Configurator** appears with the IP address of the Encoder on the URL bar. Login to access the Encoder.

Note: For full functionality, it is recommended to use Microsoft Internet Explorer®. When using non-IE browsers, free 3rd party software plug-ins may be required. Refer to the device Firmware Manual for more information.

Step 4: Access the Device (con't.)

On Network without DHCP Server (Default IP)

1. If necessary, configure the IP settings of your PC to match with the network segment of the Encoder.

Encoder Defaults

IP Address:
192.168.0.100

Subnet:
255.255.255.0

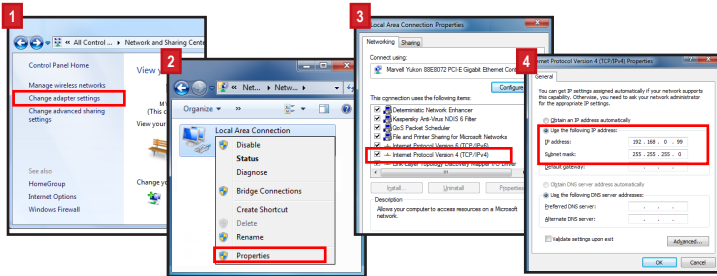


PC can be assigned with
IP Address:
192.168.0.99 or
192.168.0.101 or
192.168.0.102 and so on

Subnet:
255.255.255.0

How to configure the PC IP address?

Click **Start > Control Panel > Network and Sharing Center > Change adapter settings**. Then follow the steps below:



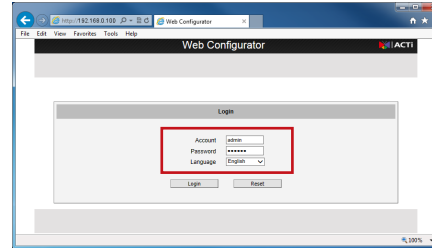
2. Open a web browser and type **192.168.0.100** on the URL address bar. The **Web Configurator** appears. Login to access the Encoder.

Note: For full functionality, it is recommended to use Microsoft Internet Explorer®. When using non-IE browsers, free 3rd party software plug-ins may be required. Refer to the device *Firmware Manual* for more information.

Step 5: Log-in

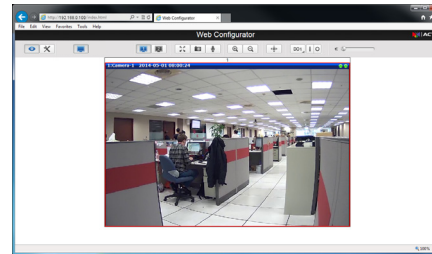
1. On the Login page, type the **Account** and **Password**.


Default
Account: **admin**
Password: **123456**



2. Select **Language**, if necessary.
3. Click **Login**.

The **Live View** screen appears.



4. Click  to access the **Setup** menu to modify the Encoder settings.

For more detailed instructions, please refer to the "Firmware Manual" downloadable from the website (www.acti.com).

Quick Installation Guide V11 Encoder



ACTI Connecting Vision and its logo are registered trademarks of ACTI Corporation.
Microsoft® and Windows® are registered trademarks of Microsoft Corporation.
All other products or company names mentioned in this document are trademarks or registered trademarks of their respective owners.

Copyright © 2014, ACTI Corporation All Rights Reserved