



Outdoor Mini Dome & Outdoor Mini Fisheye Dome Hardware Manual

E924, E925, E926, E927, E928, E929, E933,
E924M, E925M, E926M, E927M, E928M, E929M,
E933M

Ver. 2023/06/01



ACTi
Connecting Vision

Table of Contents

Precautions 4

Safety Instructions.....	6
--------------------------	---

Introduction 7

List of Models.....	7
Package Contents	9
Physical Description.....	10
E924 / E926 / E928 / E933.....	10
E925 / E927 / E929	10
E924M / E926M / E928M / E933M.....	12
E925M / E927M / E929M	12
Mounting Options	14

Installation Procedures 15

Step 1: Prepare for Installation	15
Step 2: Open the Dome Cover	16
Step 3: Route the Cables	17
Step 4: Install the Camera	18
Step 5: Waterproof the Cable Connection	19
M12 Ethernet Cable (for E9xxM models only).....	19
RJ-45 Ethernet Cable (for E9xx models only)	20
Step 6: Connect to Network	23
Step 7: Access the Camera Live View.....	23
Step 8: Close the Dome Cover	24

Other Adjustments and Accessories 25

How to Install / Remove the Memory Card	25
How to Insert the Memory Card	25
How to Remove the Memory Card	25
How to Adjust the Viewing Angle and Orientation	26

How to Connect Audio In Device29

How to Replace the Desiccant Bag30

How to Replace the Dome Cover.....31

Accessing the Camera 35

Configure the IP Addresses35

 Using DHCP Server to Assign IP Addresses..... 35

 Using the Default Camera IP Address..... 37

Access the Camera.....39

Precautions

Read these instructions

You should read all the safety and operating instructions before using this product.

Heed all warnings

You must adhere to all the warnings on the product and in the instruction manual. Failure to follow the safety instruction given may directly endanger people, cause damage to the system or to other equipment.

Servicing

Do not attempt to service this video device yourself as opening or removing covers may expose you to dangerous voltage or other hazards. Refer all servicing to qualified service personnel.

Trademarks

All names used in this manual are probably registered trademarks of respective companies.

Liability

Every reasonable care has been taken during the writing of this manual. Please inform your local office if you find any inaccuracies or omissions. We cannot be held responsible for any typographical or technical errors and reserve the right to make changes to the product and manuals without prior notice.

Federal Communications Commission Statement

This equipment has been tested and found to comply with the limits for a class B digital device, pursuant to Part 15 of the FCC Rules. These limits are designed to provide reasonable protection against harmful interference in a residential installation. This equipment generates, uses, and can radiate radio frequency energy and, if not installed and used in accordance with the instructions, may cause harmful interference to radio communications. However, there is no guarantee that interference will not occur in a particular installation. If this equipment does cause harmful interference to radio or television reception, which can be determined by turning the equipment off and on, the user is encouraged to try to correct the interference by one or more of the following measures:

- Reorient or relocate the receiving antenna.
- Increase the separation between the equipment and receiver.
- Connect the equipment into an outlet on a circuit different from that to which the receiver is connected.
- Consult the dealer or an experienced radio/TV technician for help.

Warning: Changes or modifications to the equipment that are not expressly approved by the responsible party for compliance could void the user's authority to operate the equipment.

European Community Compliance Statement

This product has been tested and found to comply with the limits for Class B Information Technology Equipment according to European Standard EN 55022 and EN 55024. In a domestic environment, this product may cause radio interference in which cause the user may be required to take adequate measures.

Safety Instructions

Cleaning

Disconnect this video product from the power supply before cleaning.

Attachments

Do not use attachments not recommended by the video product manufacturer as they may cause hazards.

Water and Moisture

Install other devices (such as PoE injector, alarm, etc.) that will be used with the camera in a dry place protected from water.

Servicing

Do not attempt to service this video product yourself as opening or removing covers may expose you to dangerous voltage or other hazards. Refer all servicing to qualified service personnel.

Damage Requiring service

Disconnect this video product from the power supply immediately and refer servicing to qualified service personnel under the following conditions.

- 1) When the power-supply cord or plug is damaged
- 2) If liquid has been spilled, or objects have fallen into the video product.
- 3) If the video product has been directly exposed to rain or water.
- 4) If the video product does not operate normally by following the operating Instructions in this manual. Adjust only those controls that are covered by the instruction manual, as an improper adjustment of other controls may result in damage, and will often require extensive work by a qualified technician to restore the video product to its normal operation.

Safety Check






Upon completion of any service or repairs to this video product, ask the service technician to perform safety checks to determine if the video product is in proper operating condition.

Introduction

List of Models

This hardware manual contains the following models:




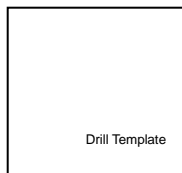





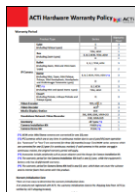
E924		5MP Outdoor Mini Dome with D/N, Adaptive IR, Basic WDR, Fixed lens
E924M		5MP Outdoor Mini Dome with D/N, Adaptive IR, Basic WDR, M12 connector, Fixed lens
E925		5MP Outdoor Mini Fisheye Dome with D/N, Adaptive IR, Basic WDR, Fixed lens
E925M		5MP Outdoor Mini Fisheye Dome with D/N, Adaptive IR, Basic WDR, M12 connector, Fixed Lens
E926		10MP Outdoor Mini Dome with D/N, Adaptive IR, Basic WDR, Fixed lens
E926M		10MP Outdoor Mini Dome with D/N, Adaptive IR, Basic WDR, M12 connector, Fixed lens
E927		10MP Outdoor Mini Fisheye Dome with D/N, Adaptive IR, Basic WDR, Fixed lens
E927M		10MP Outdoor Mini Fisheye Dome with D/N, Adaptive IR, Basic WDR, M12 connector, Fixed lens

E928		3MP Outdoor Mini Dome with D/N, Adaptive IR, Superior WDR, Fixed lens
E928M		3MP Outdoor Mini Dome with D/N, Adaptive IR, Superior WDR, M12 connector, Fixed lens
E929		3MP Outdoor Mini Fisheye Dome with D/N, Adaptive IR, Superior WDR, Fixed lens
E929M		3MP Outdoor Mini Fisheye Dome with D/N, Adaptive IR, Superior WDR, M12 connector, Fixed lens
E933		2MP Video Analytics Outdoor Mini Dome with D/N, Adaptive IR, Extreme WDR, SLLS, Fixed lens
E933M		2MP Video Analytics Outdoor Mini Dome with D/N, Adaptive IR, Extreme WDR, SLLS, M12 connector, Fixed lens

From the installation perspective, the above models are very similar; therefore one manual is used for all of them.

Package Contents

Check if the camera package comes with the following items:

Camera (E924, E924M, E926, E926M, E928, E928M, E933, E933M)		Camera (E925, E925M, E927, E927M, E929, E929M)	Screw Kit
	or		
Drill Template		Hexagon Screwdriver	Extra Desiccant Bag
			
Cosmetic Cover (For unused IR LED)		Cable Gland (Not available in E9xxM models)	Quick Installation Guide
			
Warranty Card			
			

IMPORTANT: When the camera is taken out from the box, the lens cover is covered by a thin film. DO NOT remove this film. It is used to protect the lens cover from scratches or fingerprint marks which may happen during installation. Remove this film only after the camera is securely installed and all connections are complete.

Physical Description

E924 / E926 / E928 / E933



E925 / E927 / E929



Item	Description
1	Memory Card Slot Insert a memory card (not included) into the slot for local recording purposes. See How to Install / Remove the Memory Card on page 25 for more information. NOTE: Supports only microSDHC and microSDXC cards.
2	Power LED Lights up when the camera is powered up and goes off after the boot up process is complete
3	Reset Button Restores the factory default settings of the camera. To reset the camera, while the power is on, press and hold the Reset Button for at least 5 seconds or until the Power LED lights up.
4	Ethernet Port (RJ-45) Connects to a network using an Ethernet cable with RJ-45 connector.
5	Audio Input Connects to audio input devices, such as a microphone with built-in amplifier, etc. See How to Connect Audio In Device on page 29 for more information. NOTE: The microphone must have a built-in amplifier. Connecting an ordinary microphone will dwarf sounds and will result in inaudible recording.

E924M / E926M / E928M / E933M



E925M / E927M / E929M



Item	Description	
1	Memory Card Slot	<p>Insert a memory card (not included) into the slot for local recording purposes. See How to Install / Remove the Memory Card on page 25 for more information.</p> <p>NOTE: Supports only microSDHC and microSDXC cards.</p>
2	Power LED	Lights up when the camera is powered up and goes off after the boot up process is complete
3	Reset Button	Restores the factory default settings of the camera. To reset the camera, while the power is on, press and hold the Reset Button for at least 5 seconds or until the Power LED lights up.
4	Ethernet Port (M12)	Connects to a network using an Ethernet cable with M12 connector. The camera uses the female M12 connector with D-coding and PoE type A.
5	Audio Input	<p>Connects to audio input devices, such as a microphone with built-in amplifier, etc. See How to Connect Audio In Device on page 29 for more information.</p> <p>NOTE: The microphone must have a built-in amplifier. Connecting an ordinary microphone will dwarf sounds and will result in inaudible recording.</p>

Mounting Options

Select the most suitable solution for your installation environment. The camera can be mounted by either of the following methods:

Mount Types	Accessories
Surface Mount	Suitable when mounting the camera directly on walls or ceilings without additional mounting accessories. See Installation Procedures on page 15 for more information.
Gangbox	Suitable when mounting the camera on a 4" Round or 4" Octagon Gangbox. The use of gangbox is lawfully required in some areas in the United States. A Gangbox Converter (purchased separately) is required for this type of installation.
Wall Mount	Suitable when mounting the camera on the wall with the camera facing down as if installed on the ceiling. The Wall Mount (optional mounting accessory) is required for this type of installation.
Pendant Mount	Suitable when installing the camera on high ceilings where a straight tube is used to lower the camera. The Pendant Mount with Mount Kit (optional accessory set) is required for this type of installation.

NOTE:

- For more information about the mounting solutions and accessories, please check the [Mounting Accessory Selector](http://www.acti.com/mountingselector) in our website (<http://www.acti.com/mountingselector>).
- The above mounting accessories are not included in the package. Contact your sales agents to purchase.

Installation Procedures

This section describes procedures in mounting the camera on a flat surface.

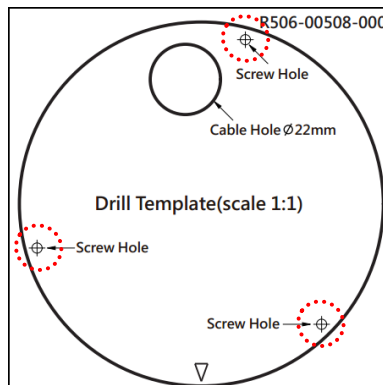
NOTE: The camera images on this documentation are for reference only and may be different from the actual camera.

Step 1: Prepare for Installation

- Before installing the camera, prepare the additional accessories required for installation.

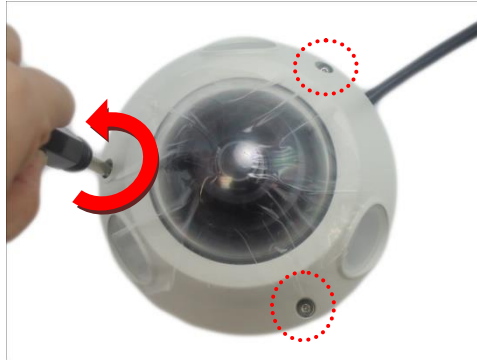
E9xx Models	E9xxM Models
<ul style="list-style-type: none"> Exterior-grade Ethernet Cable with RJ-45 connector (not included; can be purchased from local stores)  <ul style="list-style-type: none"> Bundled Cable Gland 	<ul style="list-style-type: none"> Exterior-grade Ethernet Cable with Waterproof M12 Male Connector, D-coding and PoE type A (not included; can be purchased from local stores) 

- Depending on the material of the surface where the camera will be installed, it may be necessary to drill the three (3) screw holes and use the supplied screw to. In this case, attach the bundled drill template on the surface and drill the screw holes.



Step 2: Open the Dome Cover

1. Loosen the three (3) screws using the bundled hex screwdriver.



2. Lift to remove the dome cover.



NOTE:

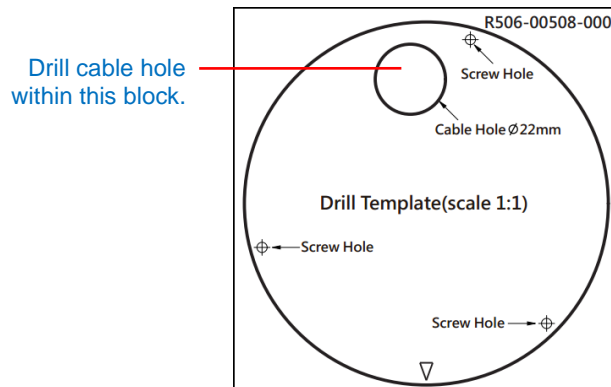
- The dome cover is attached to the camera body by a string, do not abruptly lift the dome cover!
- A desiccant bag is attached underneath the dome cover. DO NOT remove the desiccant bag to keep the camera interior parts dry. An extra bag is bundled with the camera that can be used for replacement, as needed, over time.
- The photographed model in this section is for demonstration only. The instruction applies to all models listed in this manual.

Step 3: Route the Cables

Determine whether the cable will pass through a hole on the surface or be routed along the surface:

If the cable will pass through a hole on the surface:

1. Drill the hole for the cable on the surface.



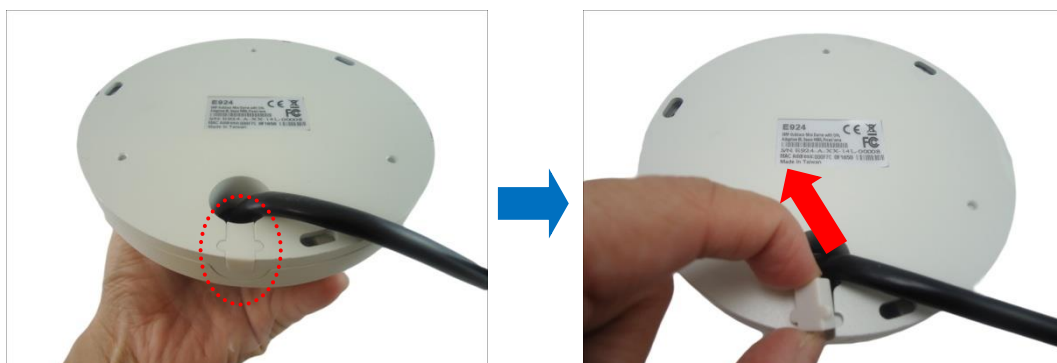
2. Route the cable from the network side through the hole and connect it to the Ethernet port of the camera.

NOTE: If the camera will be installed outdoors or in places wherein environmental factors change drastically, make sure to waterproof the cable connection; see [Step 5: Waterproof the Cable Connection](#) on page 19 for instructions.

3. Push the cable through the hole on the surface.

If the cable will be routed along the surface

1. Pull the rubber tab off from the base of the camera.



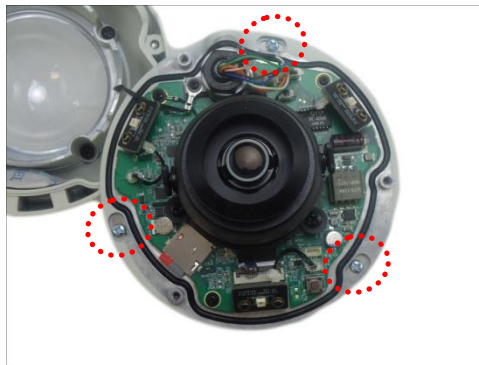
2. Route the camera cable through this gap.

Step 4: Install the Camera

1. If necessary, insert a memory card into the memory card slot of the camera. See [How to Insert the Memory Card](#) on page 25 for more information.



2. Install the camera to the surface using the three (3) bundled screws.



NOTE:

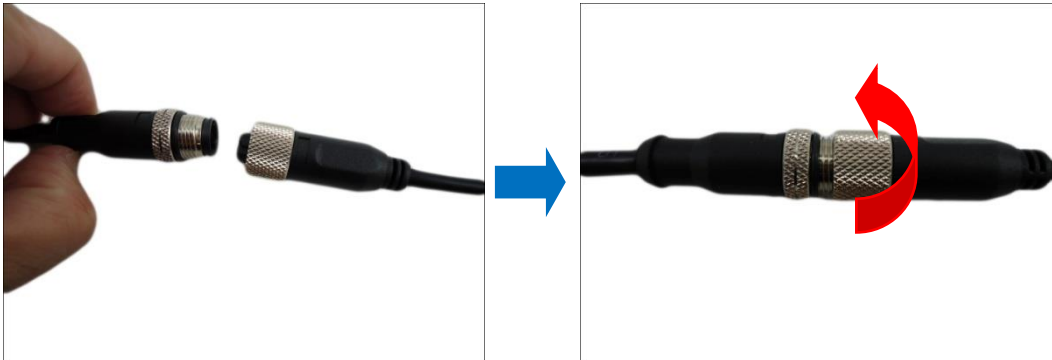
- Please make sure the screw is flat on the plate.
- The photographed model in this section is for demonstration only. The instruction applies to all models listed in this manual.

Step 5: Waterproof the Cable Connection

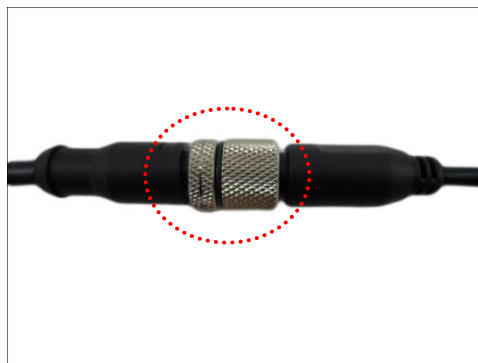
Depending on the camera model, the Ethernet cable or the “pigtail” of the camera may either have the RJ-45 or M12 connector.

M12 Ethernet Cable (for E9xxM models only)

Typical **M12 Ethernet cable** has waterproof connection. Simply connect and screw the cable connectors to make the connection waterproof.



Make sure the connectors are secured tightly.



RJ-45 Ethernet Cable (for E9xx models only)

When using the **RJ-45 Ethernet cable**, follow the procedures below to waterproof the cable connection:

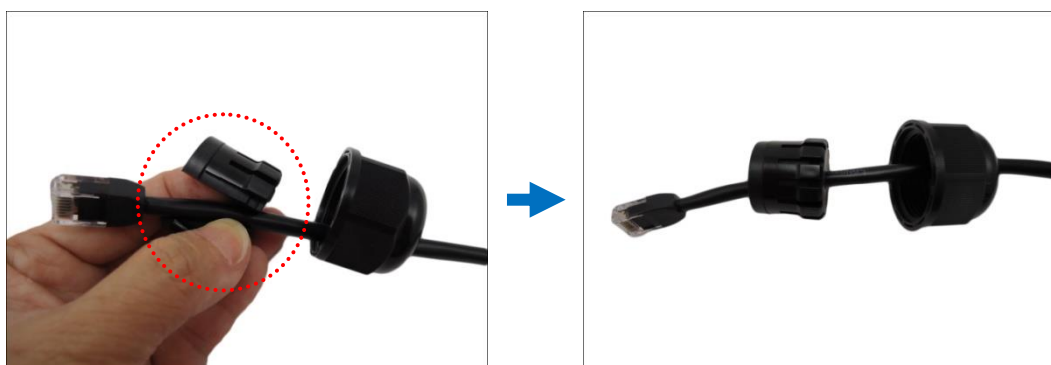
1. Detach the cable gland as shown below.



2. On the network side cable, insert the clamping nut through the Ethernet cable.



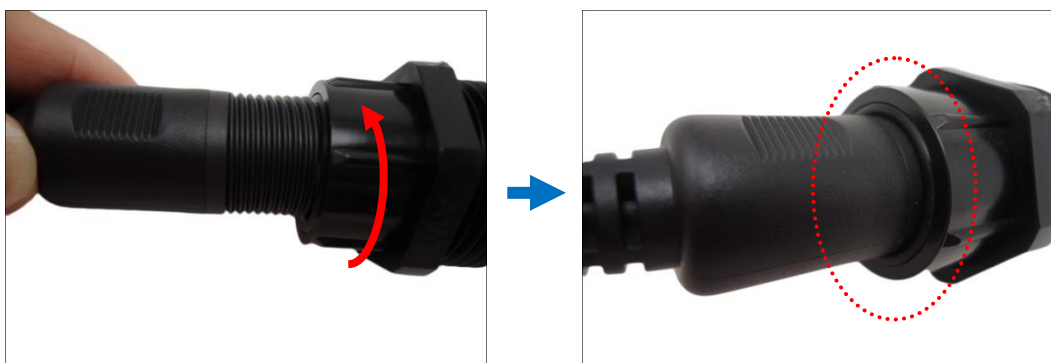
3. Insert the sealing rubber and claw through the Ethernet cable.



4. Make sure the bundled rubber ring is completely aligned on the gap on the gland body.



5. Attach the gland body to the Ethernet port of the camera.



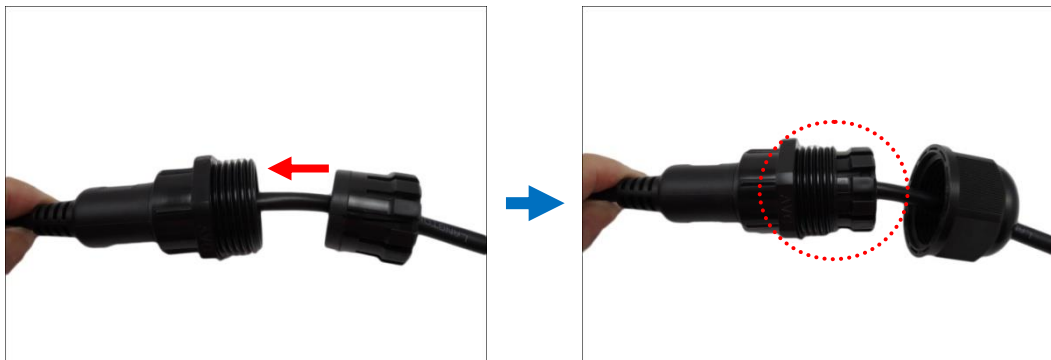
IMPORTANT!

Make sure the rubber ring is completely aligned and flat on the gland body to avoid possible water leakage.

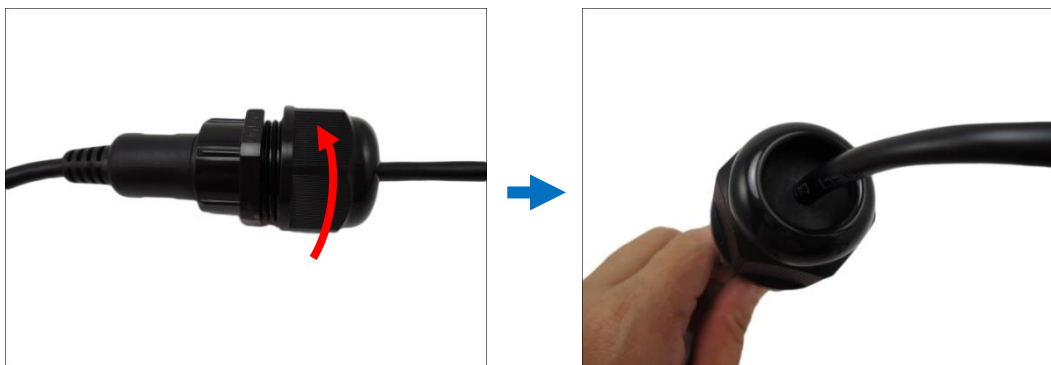
6. Connect the RJ-45 connector of the network cable to the Ethernet port of the camera.



7. Insert the sealing rubber and claw into the cable gland body.



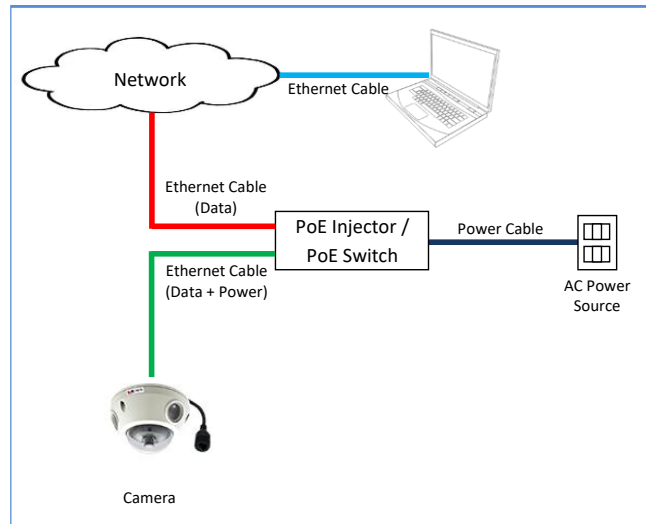
8. Attach the clamping nut to the cable gland body. Make sure the clamping nut is tightly secured and the rubber is squeezed in to avoid water leakage.



DISCLAIMER: ACTi will not be responsible for camera damage caused by water entering the cable connections.

Step 6: Connect to Network

Connect the other end of the network cable to a switch or injector. Then, connect the switch or injector to a network or PC and a power source. See Power-over-Ethernet (PoE) example connection diagram below.



Step 7: Access the Camera Live View

See [Accessing the Camera](#) on page 35 for more information on how to access the Live View of the camera.

Step 8: Close the Dome Cover

1. Align the cable hole side of the dome cover to the direction of the network cable.
2. Tighten the three (3) screws using the supplied hex screwdriver to attach the dome cover.



3. Remove the thin film.



Final installation should look similar to the illustration below.



NOTE: The photographed model in this section is for demonstration only. The instruction applies to all models listed in this manual.

Other Adjustments and Accessories

How to Install / Remove the Memory Card

How to Insert the Memory Card

1. Loosen the three (3) screws to remove the dome cover.



2. Insert the memory card into the card slot with the metal contacts facing the bottom side of the camera.



3. Push the card completely until it clicks into place.
4. Attach the dome cover to the camera and tighten the three (3) screws.

Once inserted, make sure to access the camera Web Configurator and “mount” the card to prepare the card for local recording. Refer to the camera Firmware User’s Manual for more information.

How to Remove the Memory Card

In case there is a need to remove the card, make sure to access the camera Web Configurator to safely “unmount” the card first (see the camera Firmware User’s Manual for more information). Once unmounted from the firmware, push the card to eject it from the slot.

How to Adjust the Viewing Angle and Orientation

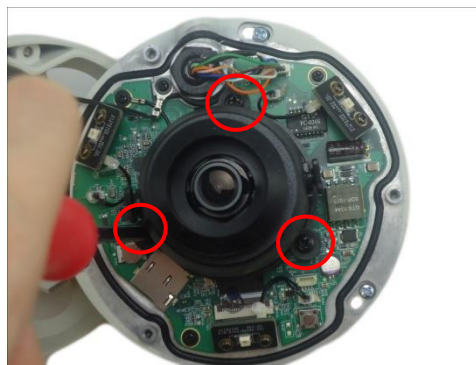
This section describes the procedures in adjusting the viewing angle and pan direction of the camera.

Camera Parts Overview



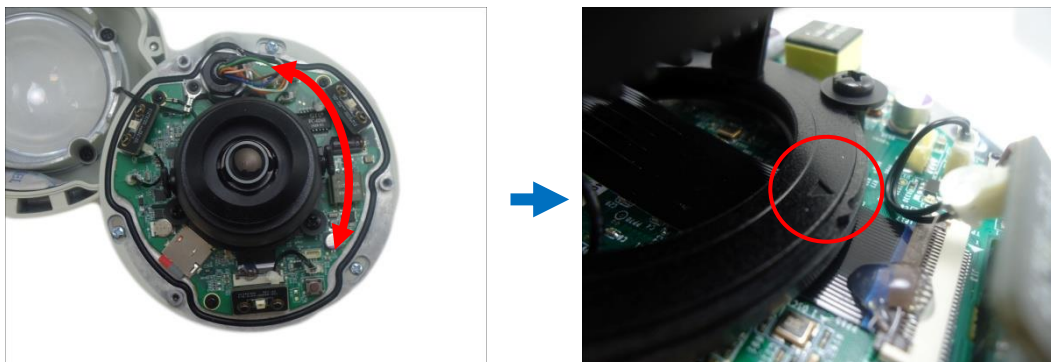
NOTE: Tilt Adjustment Screws are available on Mini Dome cameras only.

1. Open the dome cover.
2. Loosen the three (3) pan adjustment screws.

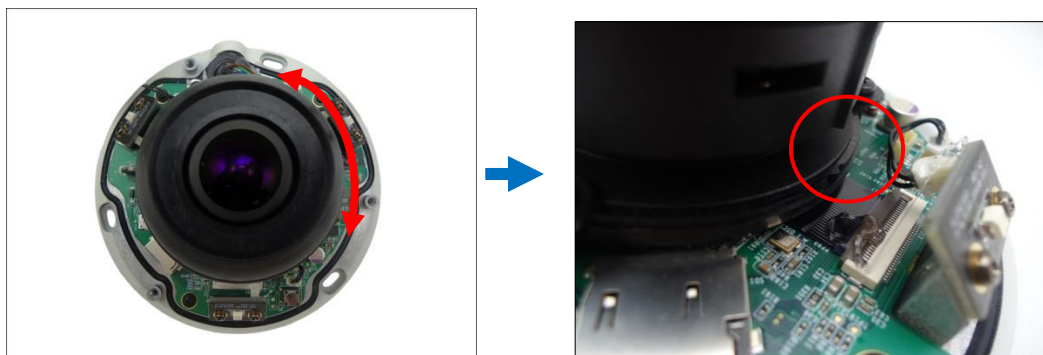


3. Move the pan direction.

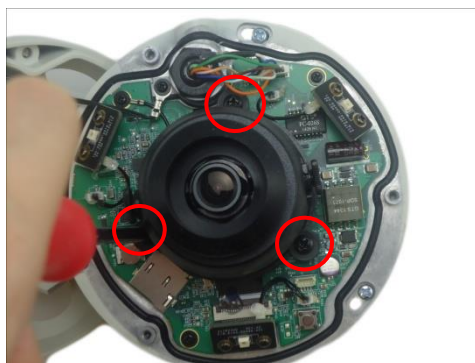
For mini dome cameras, the arrow indicates the top side orientation.



For mini fisheye dome cameras, the ridge indicates the top side orientation.



4. Once done, tighten the three (3) screws to fix the lens position. For Mini Fisheye dome cameras, skip to Step 7.



5. For Mini Dome cameras, loosen the two (2) tilt adjustment screws.

6. Adjust the tilt and tighten back the screws to fix the tilt position.



7. Close the dome cover.



How to Connect Audio In Device

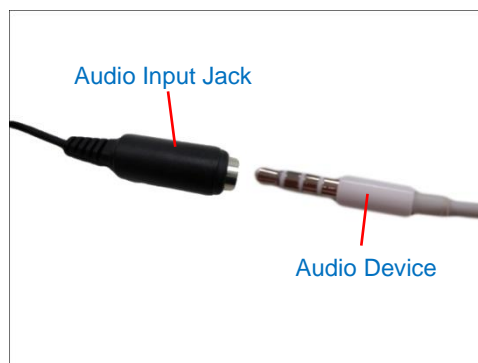
The camera comes with an audio jack where an audio input device, such as a microphone with a built-in amplifier, can be connected. The audio-in jack is covered by a rubber protection.



WARNING: Do not remove this rubber protection if the audio-in jack will not be used to avoid water or dust from entering the jack.

To connect an audio input device, do the following:

1. Pull to remove the rubber protection.
2. Connect the audio input device.



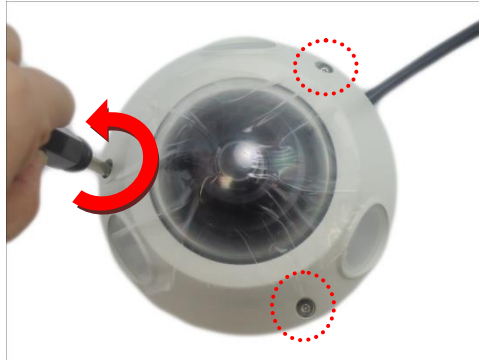
NOTE: The microphone must have a built-in amplifier. Connecting an ordinary microphone will dwarf sounds and will result in inaudible recording.

3. If the camera is installed outdoors, be sure to wrap the audio connectors with **Waterproof Tape** (can be purchased in hardware stores).

DISCLAIMER: ACTi will not be responsible for camera damage due by water leakage caused by improper waterproofing of cables.

How to Replace the Desiccant Bag

1. Loosen the three (3) screws using the bundled hex screwdriver.



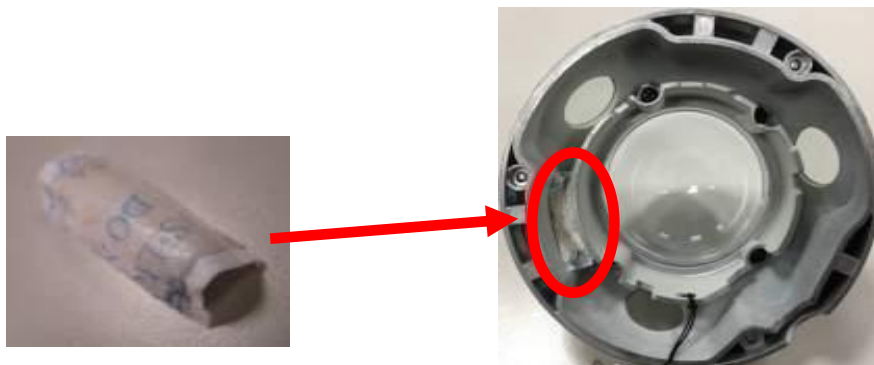
2. Lift to remove the dome cover.



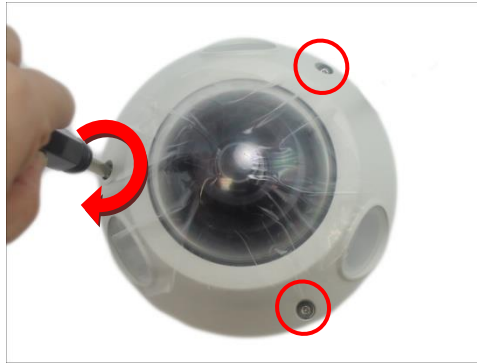
NOTE:

- The dome cover is attached to the camera body by a string, do not abruptly lift the dome cover!
- The photographed model in this section is for demonstration only. The instruction applies to all models listed in this manual.

3. Take the desiccant bag out of its silver packaging. Peel off the adhesive sticker.
4. With the adhesive side out, fold the desiccant bag and stick it beneath the dome cover.



5. Close the dome cover.



How to Replace the Dome Cover

For more discrete surveillance needs, the pre-installed dome cover can be replaced with a smoked, vandal proof dome cover. The smoked dome cover is an optional accessory; contact your sales agent to purchase.

To replace the dome cover, follow the procedures below:

1. Open the dome cover.
2. Detach the screw securing the cover to the camera module.



3. Remove the four (4) screws securing the dome cover bracket.



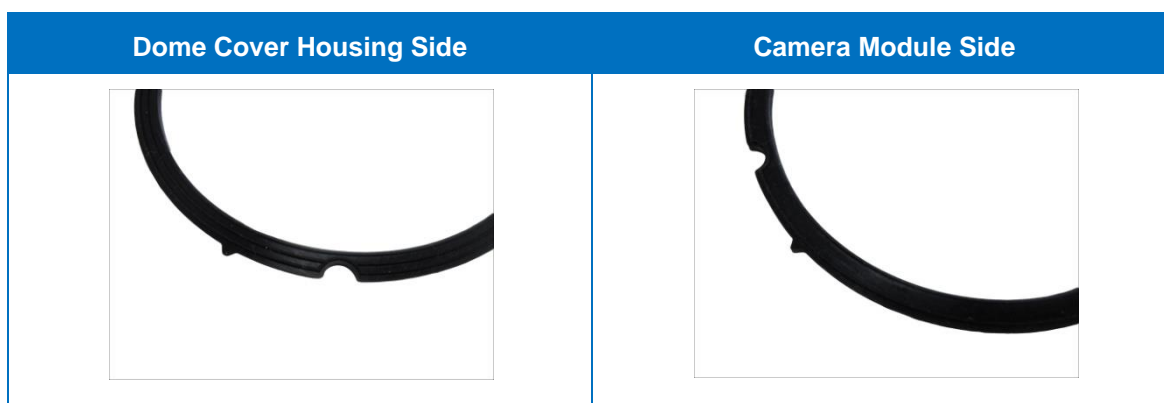
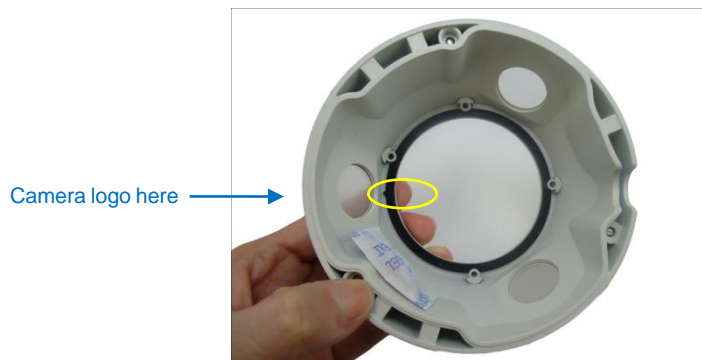
4. Remove the bracket and then the transparent dome cover.



5. Remove the black rubber from the transparent dome cover. Below is an example of the detached parts.



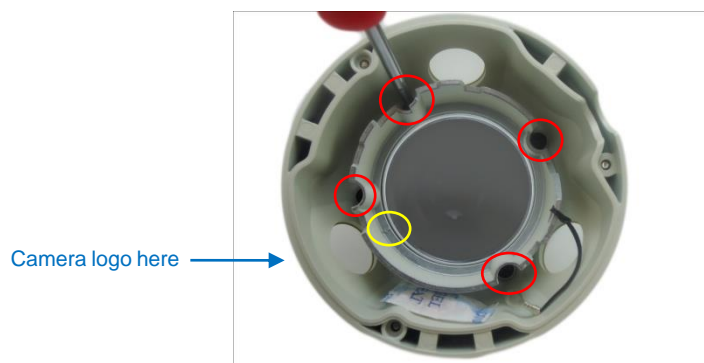
6. Align and place the rubber on the dome cover housing with the arrow pointing towards the camera logo. Note that the side of the rubber with 3 lines should face the housing while the side with 2 lines should face the camera module.



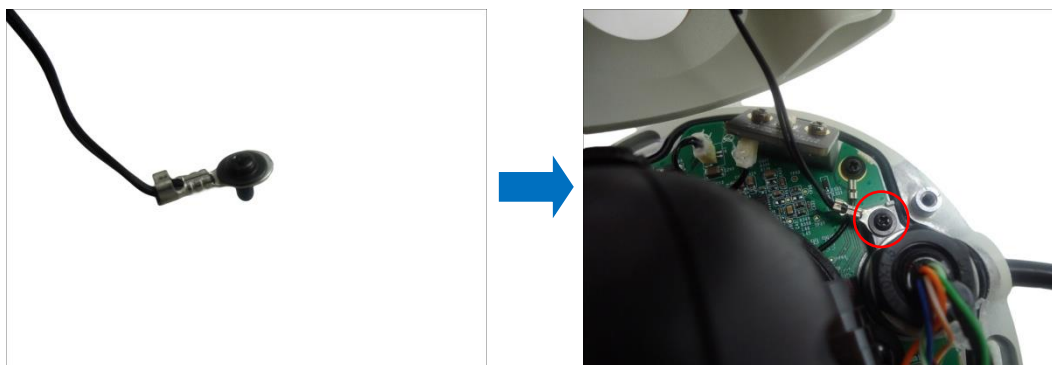
7. Align and place the replacement dome cover with the arrow pointing towards the camera logo.



8. Align and place the dome cover bracket on the housing with the arrow pointing towards the camera logo. Tightly attach the four (4) screws to secure the dome cover bracket to the housing.



9. Attach the screw to secure the dome cover housing to the camera module.



10. Close the dome cover.



Accessing the Camera

Configure the IP Addresses

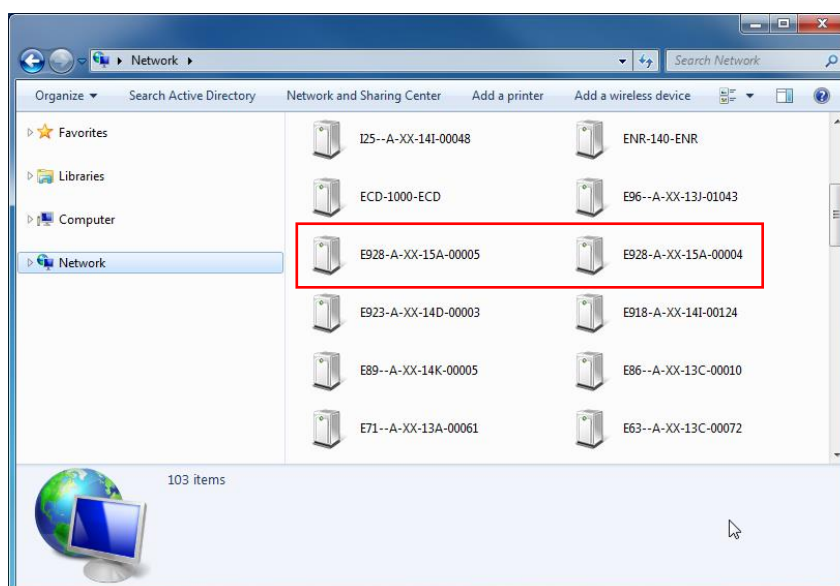
In order to be able to communicate with the camera from your PC, both the camera and the PC have to be within the same network segment. In most cases, it means that they both should have very similar IP addresses, where only the last number of the IP address is different from each other. There are 2 different approaches to IP Address management in Local Area Networks – by DHCP Server or Manually.

Using DHCP Server to Assign IP Addresses

If you have connected the computer and the camera into the network that has a DHCP server running, then you do not need to configure the IP addresses at all – both the camera and the PC would request a unique IP address from DHCP server automatically. In such case, the camera will immediately be ready for the access from the PC. The user, however, might not know the IP address of the camera yet. It is necessary to know the IP address of the camera in order to be able to access it by using a Web browser.

The quickest way to discover the cameras in the network is to use the simplest network search, built in the Windows system – just by pressing the “Network” icon, all the cameras of the local area network will be discovered by Windows thanks to the UPnP function support of our cameras.

In the example below, we successfully found the camera that we had just connected to the network.

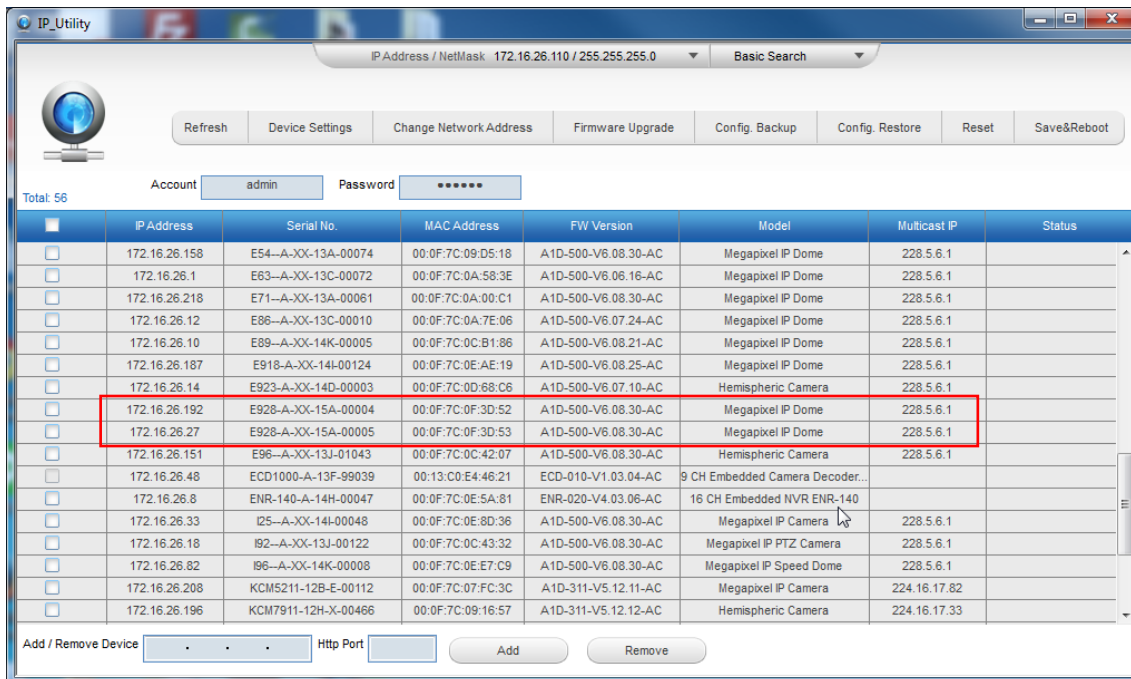


By double-clicking with the left mouse on the camera model, it is possible to automatically launch the default browser of the PC with the IP address of the target camera filled in the address bar of the browser already.

If you work with our cameras regularly, then **there is even a better way to discover the cameras in the network** – by using **IP Utility**. The IP Utility is a light software tool that can not only discover the cameras, but also list lots of valuable information, such as IP and MAC addresses, serial numbers, firmware versions, etc, and allows quick configuration of multiple devices at the same time.

The IP Utility can be downloaded for free from http://www.acti.com/IP_Utility

With just one click, you can launch the IP Utility and there will be an instant report as follows:



The screenshot shows the IP Utility window with a search bar at the top set to 'Basic Search' and IP Address / NetMask '172.16.26.110 / 255.255.255.0'. Below the search bar are buttons for 'Refresh', 'Device Settings', 'Change Network Address', 'Firmware Upgrade', 'Config. Backup', 'Config. Restore', 'Reset', and 'Save&Reboot'. A login section shows 'Account: admin' and 'Password: *****'. The main area is a table with 8 columns: IP Address, Serial No., MAC Address, FW Version, Model, Multicast IP, and Status. The table lists 20 cameras. Two rows are highlighted with red boxes: the row for IP 172.16.26.14 (Hemispheric Camera) and the row for IP 172.16.26.27 (Megapixel IP Dome). At the bottom, there is an 'Add / Remove Device' section with an 'Http Port' field and 'Add' and 'Remove' buttons.

	IP Address	Serial No.	MAC Address	FW Version	Model	Multicast IP	Status
<input type="checkbox"/>	172.16.26.158	E54-A-XX-13A-00074	00:0F:7C:09:D5:18	A1D-500-V6.08.30-AC	Megapixel IP Dome	228.5.6.1	
<input type="checkbox"/>	172.16.26.1	E63-A-XX-13C-00072	00:0F:7C:0A:58:3E	A1D-500-V6.06.16-AC	Megapixel IP Dome	228.5.6.1	
<input type="checkbox"/>	172.16.26.218	E71-A-XX-13A-00061	00:0F:7C:0A:00:C1	A1D-500-V6.08.30-AC	Megapixel IP Dome	228.5.6.1	
<input type="checkbox"/>	172.16.26.12	E86-A-XX-13C-00010	00:0F:7C:0A:7E:06	A1D-500-V6.07.24-AC	Megapixel IP Dome	228.5.6.1	
<input type="checkbox"/>	172.16.26.10	E89-A-XX-14K-00005	00:0F:7C:0C:B1:86	A1D-500-V6.08.21-AC	Megapixel IP Dome	228.5.6.1	
<input type="checkbox"/>	172.16.26.187	E918-A-XX-14L-00124	00:0F:7C:0E:AE:19	A1D-500-V6.08.25-AC	Megapixel IP Dome	228.5.6.1	
<input type="checkbox"/>	172.16.26.14	E923-A-XX-14D-00003	00:0F:7C:0D:68:C6	A1D-500-V6.07.10-AC	Hemispheric Camera	228.5.6.1	
<input type="checkbox"/>	172.16.26.192	E928-A-XX-15A-00004	00:0F:7C:0F:3D:52	A1D-500-V6.08.30-AC	Megapixel IP Dome	228.5.6.1	
<input type="checkbox"/>	172.16.26.27	E928-A-XX-15A-00005	00:0F:7C:0F:3D:53	A1D-500-V6.08.30-AC	Megapixel IP Dome	228.5.6.1	
<input type="checkbox"/>	172.16.26.151	E96-A-XX-13J-01043	00:0F:7C:0C:42:07	A1D-500-V6.08.30-AC	Hemispheric Camera	228.5.6.1	
<input type="checkbox"/>	172.16.26.48	ECD1000-A-13F-99039	00:13:C0:E4:46:21	ECD-010-V1.03.04-AC	9 CH Embedded Camera Decoder...		
<input type="checkbox"/>	172.16.26.8	ENR-140-A-14H-00047	00:0F:7C:0E:5A:81	ENR-020-V4.03.06-AC	16 CH Embedded NVR ENR-140		
<input type="checkbox"/>	172.16.26.33	I25-A-XX-14I-00048	00:0F:7C:0E:8D:36	A1D-500-V6.08.30-AC	Megapixel IP Camera	228.5.6.1	
<input type="checkbox"/>	172.16.26.18	I92-A-XX-13J-00122	00:0F:7C:0C:43:32	A1D-500-V6.08.30-AC	Megapixel IP PTZ Camera	228.5.6.1	
<input type="checkbox"/>	172.16.26.82	I96-A-XX-14K-00008	00:0F:7C:0E:E7:C9	A1D-500-V6.08.30-AC	Megapixel IP Speed Dome	228.5.6.1	
<input type="checkbox"/>	172.16.26.208	KCM5211-12B-E-00112	00:0F:7C:07:FC:3C	A1D-311-V5.12.11-AC	Megapixel IP Camera	224.16.17.82	
<input type="checkbox"/>	172.16.26.196	KCM7911-12H-X-00466	00:0F:7C:09:16:57	A1D-311-V5.12.12-AC	Hemispheric Camera	224.16.17.33	

You can quickly see the camera model in the list. Click on the IP address to automatically launch the default browser of the PC with the IP address of the target camera filled in the address bar of the browser already.

Using the Default Camera IP Address

If there is no DHCP server in the given network, the user may have to assign the IP addresses to both PC and camera manually to make sure they are in the same network segment.

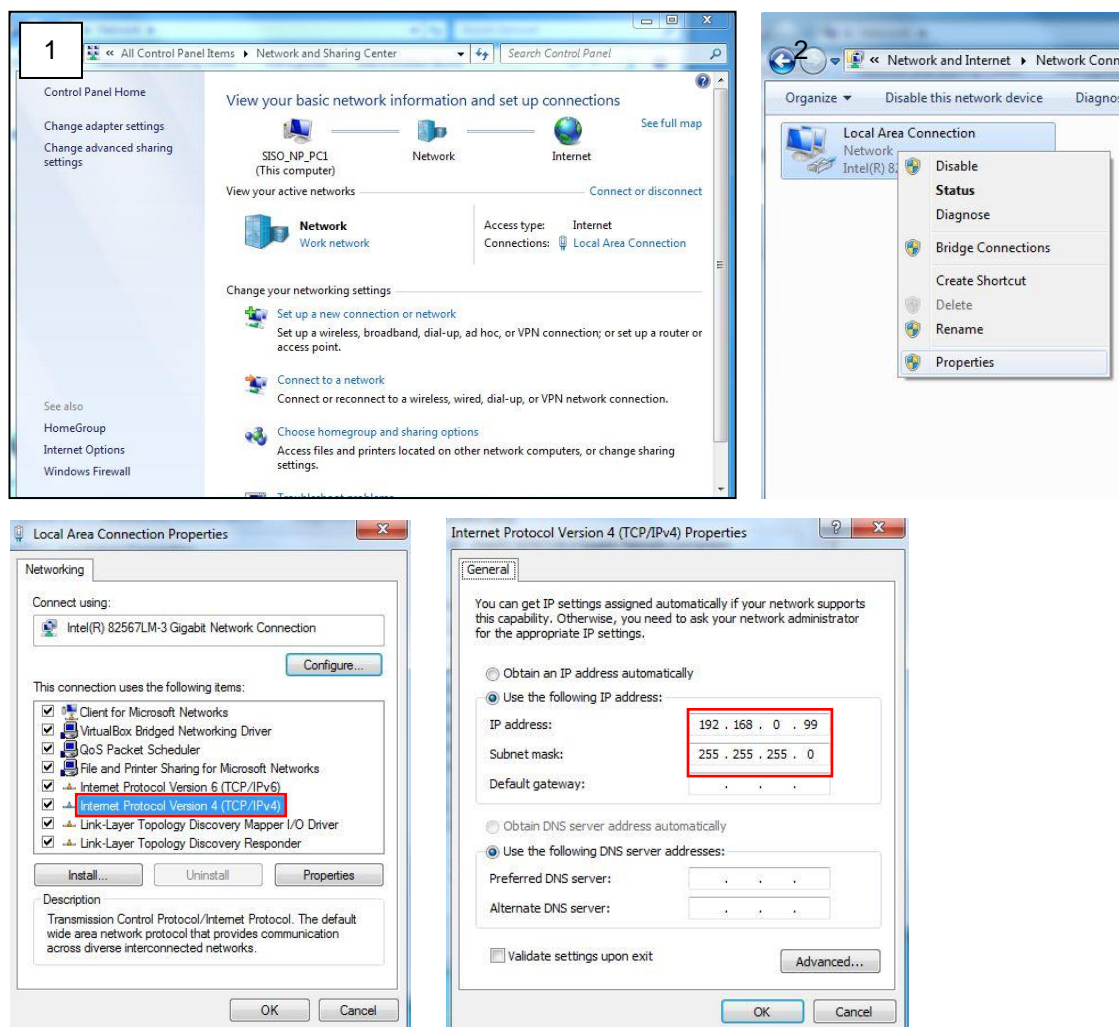
When the camera is plugged into network and it does not detect any DHCP services, it will automatically assign itself a default IP:

192.168.0.100

Whereas the default port number would be **80**. In order to access that camera, the IP address of the PC has to be configured to match the network segment of the camera.

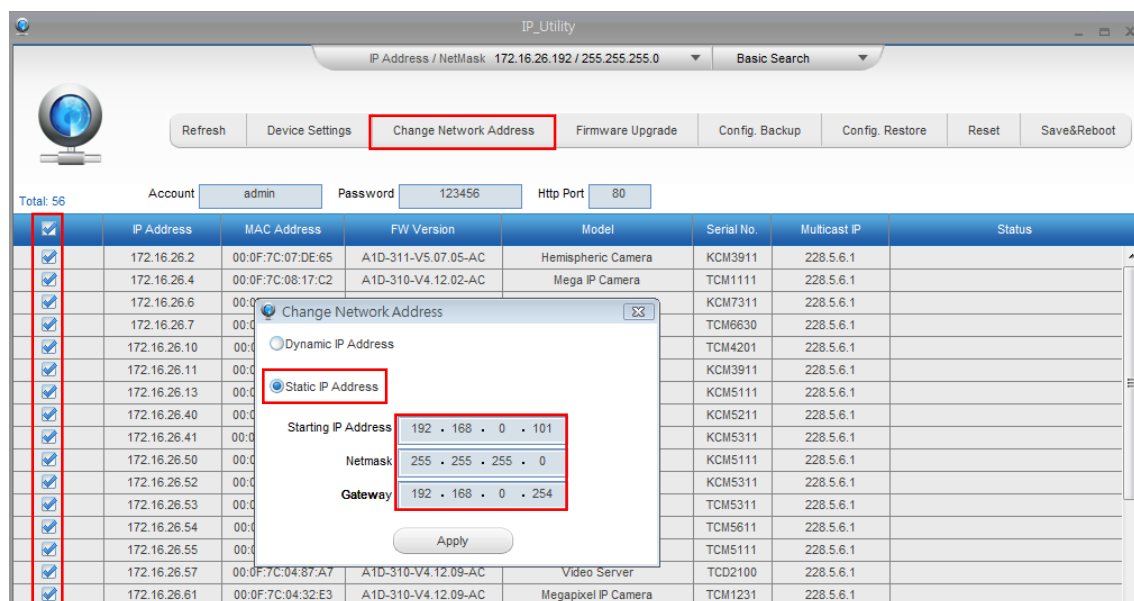
Manually adjust the IP address of the PC:

In the following example, based on Windows 7, we will configure the IP address to **192.168.0.99** and set Subnet Mask to **255.255.255.0** by using the steps below:



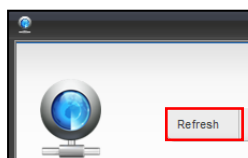
Manually adjust the IP addresses of multiple cameras:

If there are more than 1 camera to be used in the same local area network and there is no DHCP server to assign unique IP addresses to each of them, all of the cameras would then have the initial IP address of **192.168.0.100**, which is not a proper situation for network devices – all the IP addresses have to be different from each other. The easiest way to assign cameras the IP addresses is by using **IP Utility**:



With the procedure shown above, all the cameras will have unique IP addresses, starting from 192.168.0.101. In case there are 20 cameras selected, the last one of the cameras would have the IP 192.168.0.120.

Later, by pressing the “Refresh” button of the IP Utility, you will be able to see the list of cameras with their new IP addresses.



Please note that it is also possible to change the IP addresses manually by using the Web browser. In such case, please plug in only one camera at a time, and change its IP address by using the Web browser before plugging in the next one. This way, the Web browser will not be confused about two devices having the same IP address at the same time.

Access the Camera

Now that the camera and the PC are both having their unique IP addresses and are under the same network segment, it is possible to use the Web browser of the PC to access the camera.

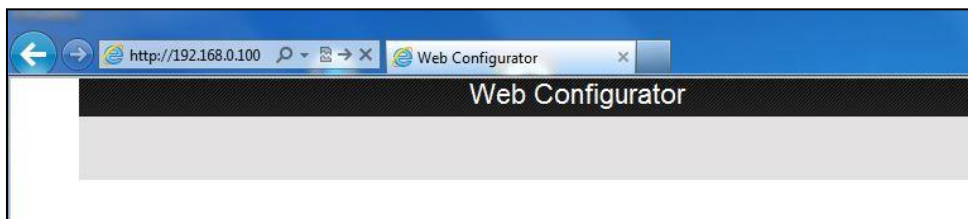
You can use any of the browsers to access the camera. Third-party software plug-ins must be installed to the PC first to be able to get the live video feed from the camera, follow the on-screen instructions.

The following examples in this manual are based on Internet Explorer browser in order to cover all functions of the camera.

Assuming that the camera's IP address is **192.168.0.100**, you can access it by opening the Web browser and typing the following address into Web browser's address bar:

http://192.168.0.100

Upon successful connection to the camera, the user interface called **Web Configurator** would appear together with the login page. The HTTP port number was not added behind the IP address since the default HTTP port of the camera is 80, which can be omitted from the address for convenience.



Before logging in, you need to setup the root Account and Password of the camera.

Set Root Account Name and Password

Name

Password

Confirm Password

Language

English

▼

Apply

Reset

Then, use this newly setup **Account** and **Password** to login to the Web Configurator.



Copyright © 2015, ACTi Corporation All Rights Reserved

7F, No. 1, Alley 20, Lane 407, Sec. 2, Ti-Ding Blvd., Neihu District, Taipei, Taiwan 114, R.O.C.

TEL : +886-2-2656-2588 FAX : +886-2-2656-2599

Email: sales@acti.com